

# USER MANUAL



Thank you for choosing Better Bathrooms.  
Please read this manual before installing your product  
and keep for future reference.

**better**   
**bathrooms**

## Opala curved Radiator

OPAA1600

OPAA1800

OPAB1600

OPAB1800



- **Single-person assembly**
- **Tools required**
- **We always recommend using professional tradespeople to install your product**

V1\_17.12.24

# Congratulations on your purchase

*And welcome to our growing gang of savvy shoppers*

We're on a mission to bring you extraordinary bathroom products, for less. From modern to traditional style ceramics, plus the gorgeous fixtures, fittings and furniture to match. So, you can fall in love with your space every single day.

As one of the UK's largest independent bathroom stores, we've received countless awards; including the National Business Awards UK, the Digital Entrepreneur Awards and being placed on The Sunday Times Fast Track 100.

We hope your new product goes above and beyond your expectations. However, should any problems occur, please:

- Call our friendly UK call centre on **0330 390 3062** (9am-7pm Monday to Friday, or 10am-4pm Saturday and Sunday), or
- Send us a message via [customerservices@buyitdirect.co.uk](mailto:customerservices@buyitdirect.co.uk)

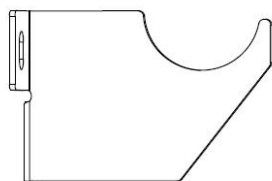
## Important information

- Please read these instructions thoroughly and retain for future reference
- Manufactured to BS EN 442-1 Radiators
- Do not throw away packaging until you have located and confirmed that you have all included parts.
- Inspect the finish on the product prior to installation, any damage reported after installation will not be covered.
- The provided fixings are for solid brick walls only, if installing on any other surface please check that it will safely support the product and purchase suitable fixings.
- The pipework must be flushed out to remove any debris which can affect the function of this product.

## BTU and Wattage info-

Product Code	BTU @ $\Delta 50^{\circ}\text{C}$	Wattage @ $\Delta 50^{\circ}\text{C}$
OPAA1600	3055	895
OPAA1800	3048	893
OPAB1600	3055	895
OPAB1800	3048	893

# Parts



Brackets x 4



Brackets Plastic sleeve  
x4



Long Screw  
x8



Masonry Wall Plug  
x8



Plastic screw caps  
x8



Airvent  
x1



Blanking plug  
x1



O-ring  
x2



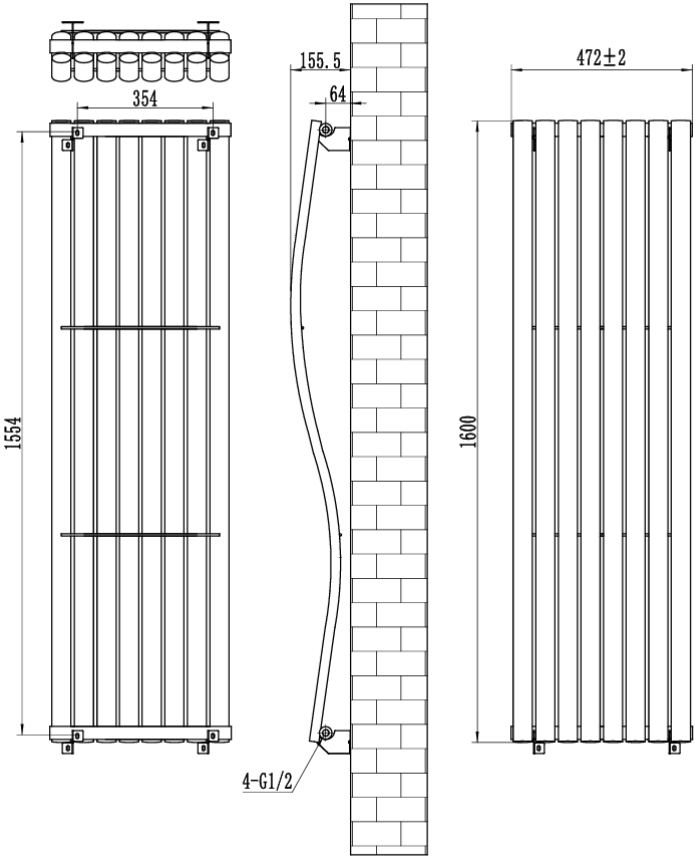
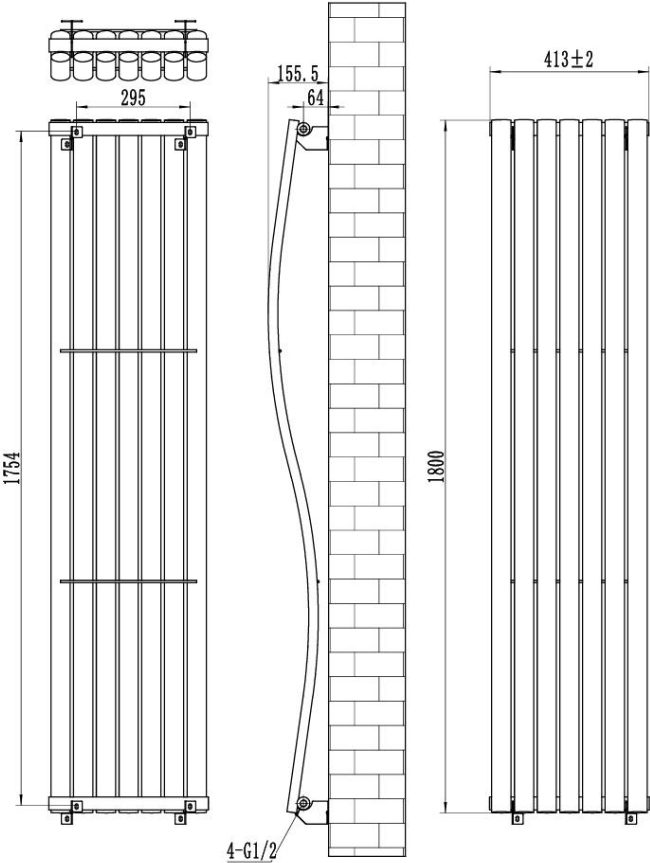
Plastic plug  
x2

**Please note that** parts are for illustrative purposes only and may differ slightly to the actual product

# Technical Drawing

**OPAA1800**  
**OPAB1800**

**OPAA1600**  
**OPAB1600**



# Tools Required

For your own protection we recommend that you wear safety boots and gloves.

Spanner

Flathead screwdriver

Phillips screwdriver

Tape measure

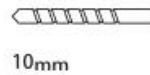
Drill

Spirit level

Pencil

Sealing tape

Tools required for installing:



# Installation

**Please note:** Before starting any installation, turn off the water supply.

**Please note:** Before commencing any installation, the desired location should be checked before drilling, so that no pipes or wires can be damaged

A fully qualified and competent person should install this product.

This towel rail can only be used with water pressure of less than PN 0.8MPa (8g/cm<sup>2</sup>, 8Bar) and water temperature below 100 °C.

If the temperature exceeds 48 °C please show a warning sign near the product to avoid burning and scolding accidents

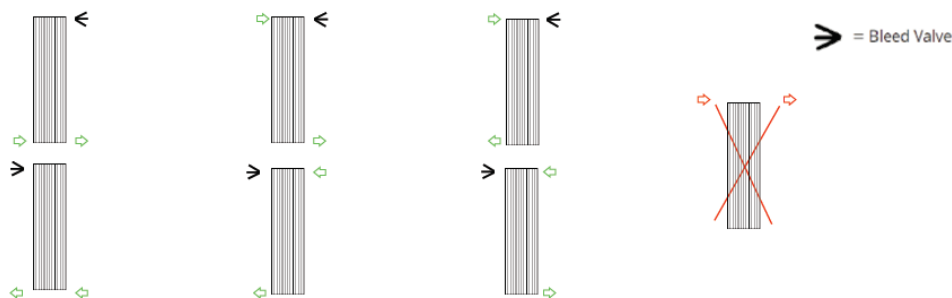
The product is only suitable for use on indirect or sealed central heating systems including combination boilers.

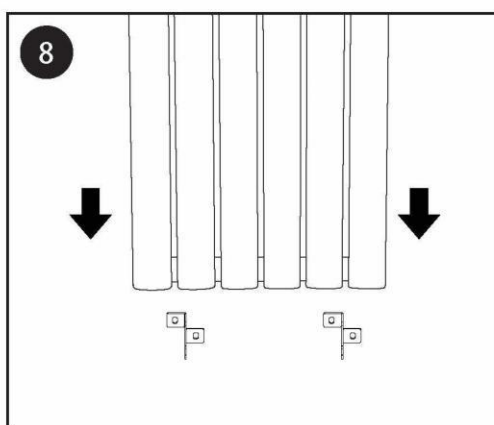
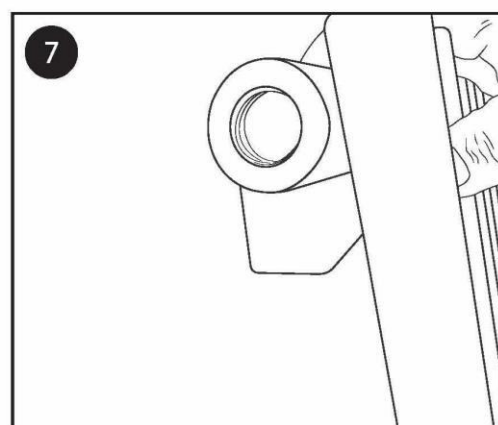
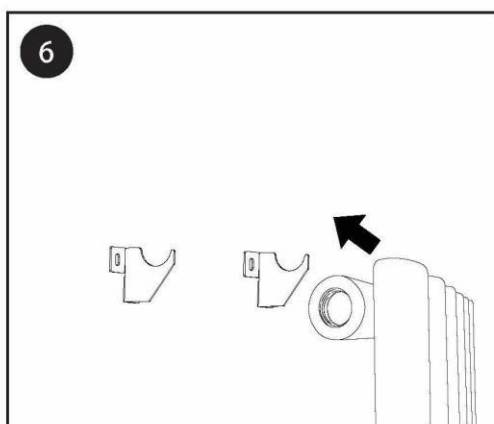
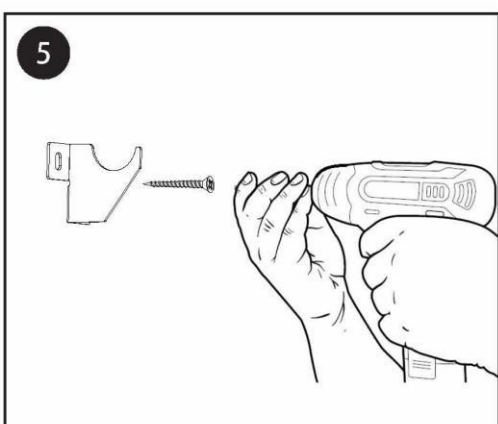
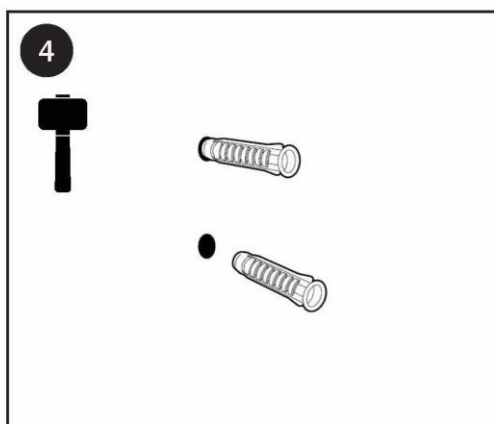
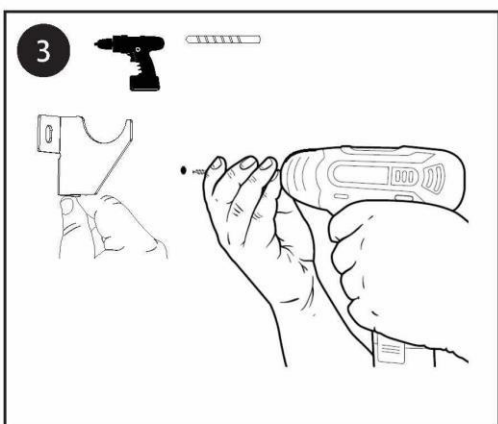
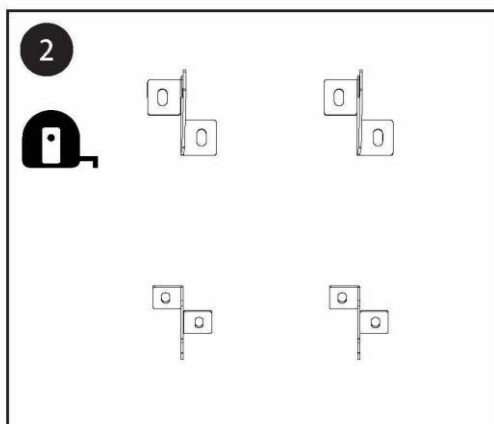
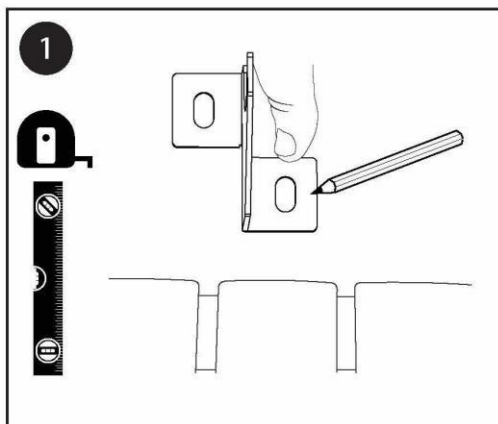
To ensure you can enjoy your radiator for as long as possible, it is essential you first **FLUSH YOUR HEATING SYSTEM WITH A CENTRAL HEATING CLEANSER**, this will clear any waste from the system. Following the cleanings of the system you must **PROTECT THE SYSTEM WITH A CENTRAL HEATING INHIBITOR**. These two simple steps will greatly increase the efficiency and lifespan of your central heating system. Failure to complete these steps increases the chance of pinhole leaks, and will also invalidate the guarantee on your radiator.

## Installation Instructions

### Valve installation advice :

Please ensure that your radiator valves are fitted as per the below diagrams ensuring that a bleed point always remains at the top of the unit. If connecting both feeds to the bottom it is recommended that a baffle is used.





1) Decide positions to install

2) Positioning brackets on the wall

3) Drill holes on the wall

4) Put plastic wall plugs into holes

5) Fix the brackets on the wall

6/7/8) Hang the product on the brackets

Finally, fit the radiator valves to the pipework and connect to the radiator valve tail and tighten all connections.

# After installation

- After the above installation, turn on the water supply and using the flathead screwdriver, open the air vent via the central screw, open the inlet valve and let the water rush into the radiator. Check all connections for leaks.
- Once water overflows from the air vent, this means that there will be no air bubbles present.
- Use a screwdriver to close the air vent and then the radiator is ready to use

# Care Instructions

This radiator is made from steel with powder coating finish. To maintain the surface of your product (especially when subjected to steam or splashes), wipe with a clean damp cloth and wipe dry.

Do not use abrasive cleaning agents or materials which can strip and scratch the surface; the use of these agents or materials can invalidate your guarantee.

It is recommended to wipe and dry on a regular basis.

## ***For more information***

- visit [betterbathrooms.com](https://betterbathrooms.com)
- email [customerservices@buyitdirect.co.uk](mailto:customerservices@buyitdirect.co.uk)
- call 0330 390 3062
- write to Trident Business Park, Neptune Way, Huddersfield, HD2 1UA

**better  
bathrooms** 

Part of the BuyItDirect Group